

***Dolphins are actually whales!***

There are two types of whales:

Toothed Whales (Odontoceti)

and

Baleen Whales (Mysticeti)

Orca



Gray Whale



Dolphin



Humpback Whale



Sperm Whale



Blue Whale



1. Predict whether you think toothed whales, baleen whales, or both types use echolocation. Circle your choice.

Toothed

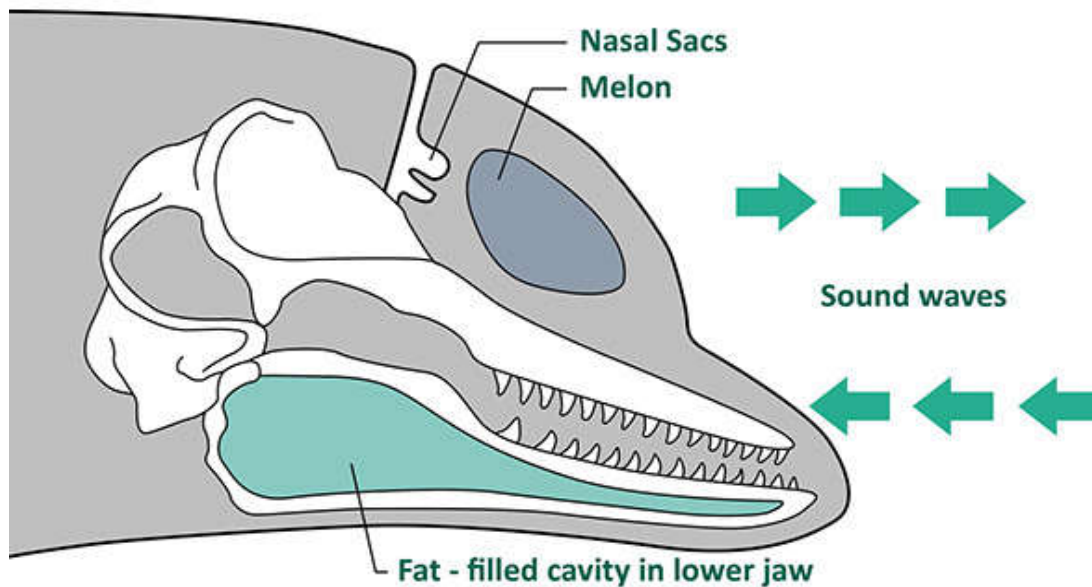
Baleen

Both

2. Research the difference between toothed and baleen whales. Fill in the chart below with at least four facts in each category.

<p style="text-align: center;"><b>Toothed Whales</b> Odontoceti</p>	<p style="text-align: center;"><b>Baleen Whales</b> Mysticeti</p>

3. Which type of whale uses echolocation?

*Echolocation*

The diagram above shows the internal structures of a dolphin's head. The melon concentrates and releases sound into the environment. The sound bounces off of something and reflects back to the dolphin's lower jaw, where the sound travels to its brain and the dolphin can determine what and where that object is.

4. You are a dolphin looking for lunch. You begin emitting sound waves from your melon in hopes that those sound waves will bounce back to you letting you know that fish are close by.
  - Paint, draw, or design an image online of this scenario. Make sure to include the environment the dolphin is in, other possible plants/animals around, and the sound waves released and returning to you.